

# RayzorXPro

Portable, High Energy, Immediate DR Imaging

**100% Portable: Thinnest Digital Imager in the World**

**Best Image Quality, Highest Detection Level**

**Fully Battery Operated, Built-in Wireless**

**Immediate Images at a Click of a Button**

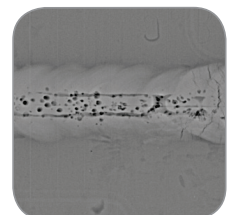
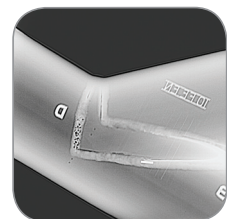


## RayzorXPro

Vidisco's portable **RayzorXPro** enables fast set up under any conditions, at any location – whether it is on site, outdoors or in the laboratory. With the super thin **RayzorXPro** DDA imager and integrated wireless options, you can conduct X-ray inspections anywhere, without cables. Highest quality, razor sharp images are created with a click of a button enabling you to conduct immediate analysis on your laptop immediately, on site.

The **RayzorXPro** Digital Detector Array (DDA) produces the best image quality in the market allowing for highest detection level. The unique combination of fast image generation, proprietary software, enhancement and analysis tools, as well as efficient operation, dramatically speeds the inspection process, increasing NDT profitability.

Digital Radiography (DR) is the most advanced X-ray technology available. Vidisco continues to be the innovation leader in X-ray inspection.



# Portable, High Energy, Immediate DR Imaging

## RayzorXPro

### Smart ICU

- Rock solid & reliable
- Powerful CPU: Fastest data transmission
- Built-in super fast wireless data transfer (proprietary sequence)
- Built-in wireless X-ray
- Charging during AC operation
- Digital display
- All weather design
- Tripod mountable



- **Modular Design:** Easy set up, dual use, in the lab or field. Compatible with portable Pulsed, Constant Potential & High Frequency X-ray sources, as well as Isotopes. Full synchronization with various X-ray sources.
- **Top Image Quality:** 14 bit dynamic range (16,384 Grey levels) and 3.5 lp/mm resolution.
- **Minimal Electronic Noise:** Excellent Signal to Noise Ratio (SNR) and minimal internal scattering.
- **Image on Screen within Seconds!** No repositioning, results shown immediately. No developing! No scanning! No chemicals!
- **Best ROI in the Market!** Efficient operation increases NDT profitability and operator safety. Exposure times dramatically shortened, plant disruption minimized! Images available immediately for on-site analysis, and stored in database for future review & monitoring.
- **Wireless Solutions:** Built-in fast wireless 300m. Special 750m long range package. High powered wireless up to 1500m (line of sight).
- **Wireless X-ray:** Operation of Pulsed X-ray sources and selected CP sources.
- **Professional Software:** Easy to repeat testing procedures, 800% zoom and other proprietary algorithms. User friendly operation.
- **Automatic, Precise Wall Thickness & Defect Measurement Tools.**
- **Complies with Current Industry Standards.**
- **100% Battery Operation:** Over 5 hours of continuous work on site. Charging while working on external (AC) power, display of battery status.
- **Plug & Play:** A system also easily operates the **FlashXPro** and **BlazeXPro** large area imagers as well as previous generation flat panels.

### Technical Specifications\*

<b>Imaging Area:</b>	222 X 222 mm (~9 X 9 inch) 5mm from bottom and 7 mm from detector side
<b>Imager Size:</b>	360 X 330 X 13 mm (h,w,d) Thinnest DDA Imager in the World! 14.2 X 13 X 0.5 inch
<b>Imager Weight:</b>	3.5 Kg (~7.7 lbs)
<b>Imager Sensor Type:</b>	Amorphous Silicon (a-Si) Digital Detector Array (DDA) Flat Panel Imager
<b>Dynamic Range:</b>	14 bit (16,384 Grey levels)
<b>Resolution:</b>	3.5 lp/mm
<b>Power Supply:</b>	Over 5 hours of battery operation/ AC 110/220V for unlimited period of time Charging during AC operation, full charge in just 6 hours
<b>Optional Accessories Available:</b>	<b>WiFi X:</b> Digital Wireless System – connecting laptop to ICU/imager 300m (line of sight) <b>WiFi X LR:</b> Long Range Wireless Option – up to 750m (line of sight) <b>Dual WiFi X LR:</b> Long Range Wireless Option – up to 1500m (~ 1 mile!) line of sight <b>WXR:</b> Wireless X-ray – eliminates cable connection to X-ray (Golden) <b>Extension Cable:</b> Up to 200m distance <b>DC/AC Car Inverter:</b> For unlimited power supply from a vehicle – power down the line <b>Tripod Mount:</b> Compatible with standard tripod** <b>Protective Cover:</b> Lightweight, especially designed for field use (default) <b>External Camera:</b> For external color images & video <b>XR-DE Plus:</b> Dual Energy Module for Organic/Inorganic Detection (proven multiple material recognition)
<b>Software:</b>	Advanced proprietary <b>XbitPro</b> software for NDT applications

\* System configuration is subject to market changes and manufacturer specifications

\*\* note: Tripod not provided