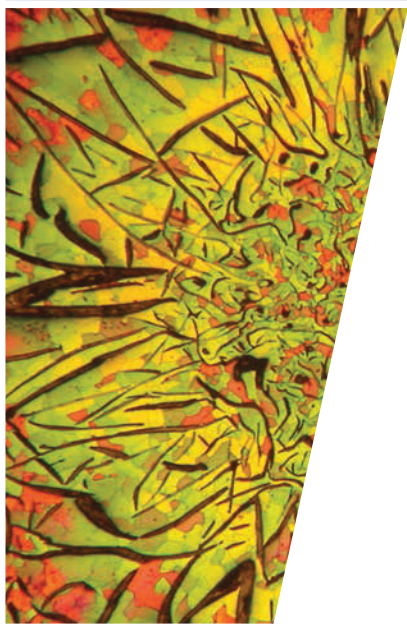
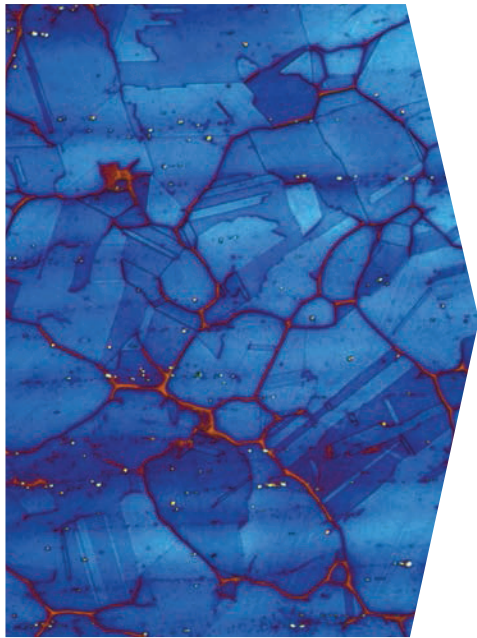


Configuration Guide  
**Microscopes**



# Upright Industrial Microscopes

## Nikon Eclipse LV150N Upright Microscope

- Versatile upright microscope suitable for reflected light applications
- Available with LED illumination for BF applications
- Available with Halogen (50W) illumination for BF, DF, DIC & POL
- Epi Plan Fluor objectives provide superior chromatic aberration performance, high numerical apertures, and long working distance at all magnifications



| Objectives | 1x Camera Adapter |                        |                      | 0.7x Camera Adapter |                      | 0.55x Camera Adapter |                      |
|------------|-------------------|------------------------|----------------------|---------------------|----------------------|----------------------|----------------------|
|            | Magnification     | FOV<br>(with eyepiece) | FOV<br>(with camera) | Magnification       | FOV<br>(with camera) | Magnification        | FOV<br>(with camera) |
| 1x*        | 10x               | 22mm                   | 6.6mm                | 7x                  | 9.4mm                | 5.5x                 | 12mm                 |
| 2.5x*      | 25x               | 8.8mm                  | 2.6mm                | 17.5x               | 3.8mm                | 13.75x               | 4.8mm                |
| 5x         | 50x               | 4.4mm                  | 1.3mm                | 35x                 | 1.9mm                | 27.5x                | 2.4mm                |
| 10x        | 100x              | 2.2mm                  | 0.7mm                | 70x                 | 0.9mm                | 55x                  | 1.2mm                |
| 20x        | 200x              | 1.1mm                  | 0.3mm                | 140x                | 0.5mm                | 110x                 | 0.6mm                |
| 40x*       | 400x              | 0.6mm                  | 0.2mm                | 280x                | 0.2mm                | 220x                 | 0.3mm                |
| 50x        | 500x              | 0.4mm                  | 0.1mm                | 350x                | 0.2mm                | 275x                 | 0.2mm                |
| 100x*      | 1000x             | 0.2mm                  | 0.1mm                | 700x                | 0.1mm                | 550x                 | 0.1mm                |

\*Not included in standard configuration packages. LV150N can hold up to 6 BF objectives or 5 DF/DIC objectives total.

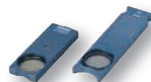
## Nikon LV150N Upright Microscope Preconfigured Packages

| Part Number | Configuration  |
|-------------|--|
| 8745-01     | Nikon LV150NL BF Upright LED Microscope - with stationary trinocular body tube, 10x eyepieces, LV-TV camera port (requires camera adapter), LED illumination, manual 3 x 2in [76 x 51mm] mechanical stage, 6-position nosepiece with 5x, 10x, 20x and 50x Epi Plan Fluor BF objectives, and dust cover.  |
| 8745-02     | Nikon LV150N BF/DF/DIC Upright Halogen Microscope - with stationary trinocular body tube, 10x eyepieces, LV-TV camera port (requires camera adapter), Halogen illumination with 50W bulb, NCB11 and ND4 filters, 3 x 2in [76 x 51mm] mechanical stage, 5-position nosepiece with 5x, 10x, 20x and 50x Epi Plan Fluor BF objectives, rotating polarizer/analyzer, DIC slider, and dust cover. |

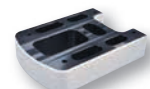
## Nikon LV150N Upright Microscope Accessories



**8745-61**  
Polarizer/Analyzer for LV150N Halogen  
(included with DIC Package)



**8745-62**  
Polarizer/Analyzer for LV150NL LED



**8745-63**  
Column Riser (adds 35mm of working distance, max 2)



**8749-11**  
Camera Adapter, C-Mount, 0.55x, LV-TV



**8749-12**  
Camera Adapter, C-Mount, 0.7x, LV-TV



**8749-13**  
Camera Adapter, C-Mount, 1x, LV-TV